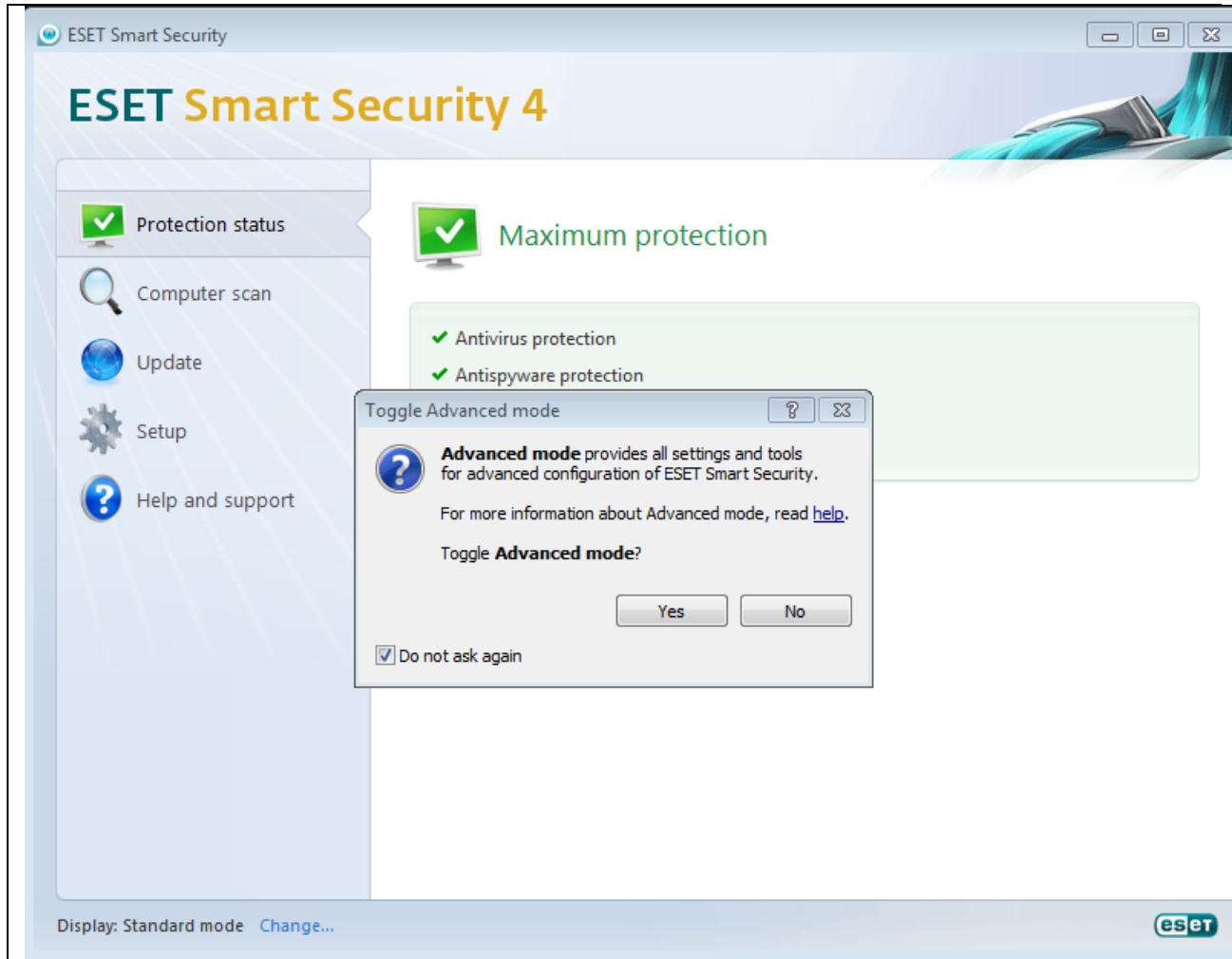


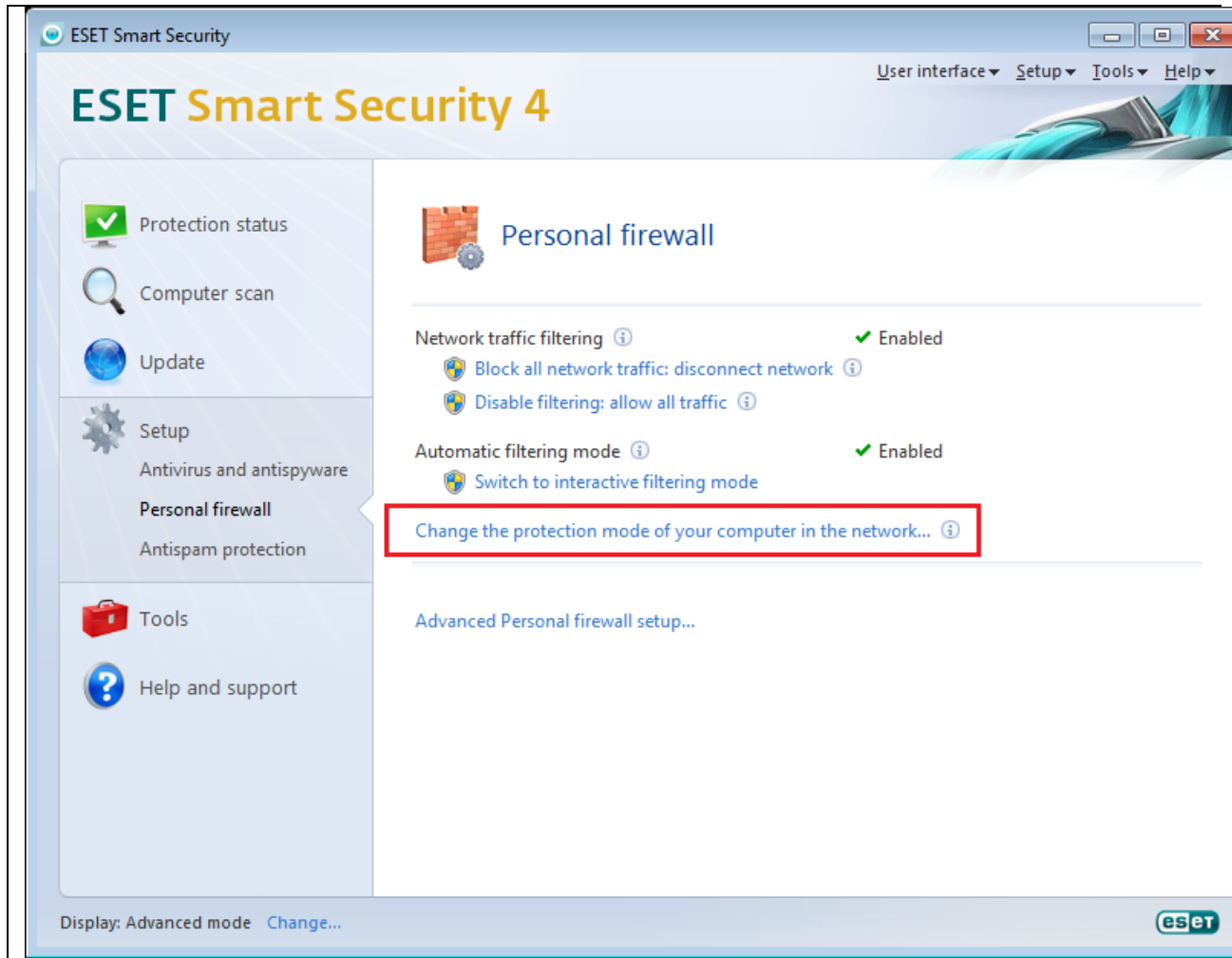


Initiate the ESET Smart Security Software application and then toggle to advanced mode via the bottom of the page Display Option.



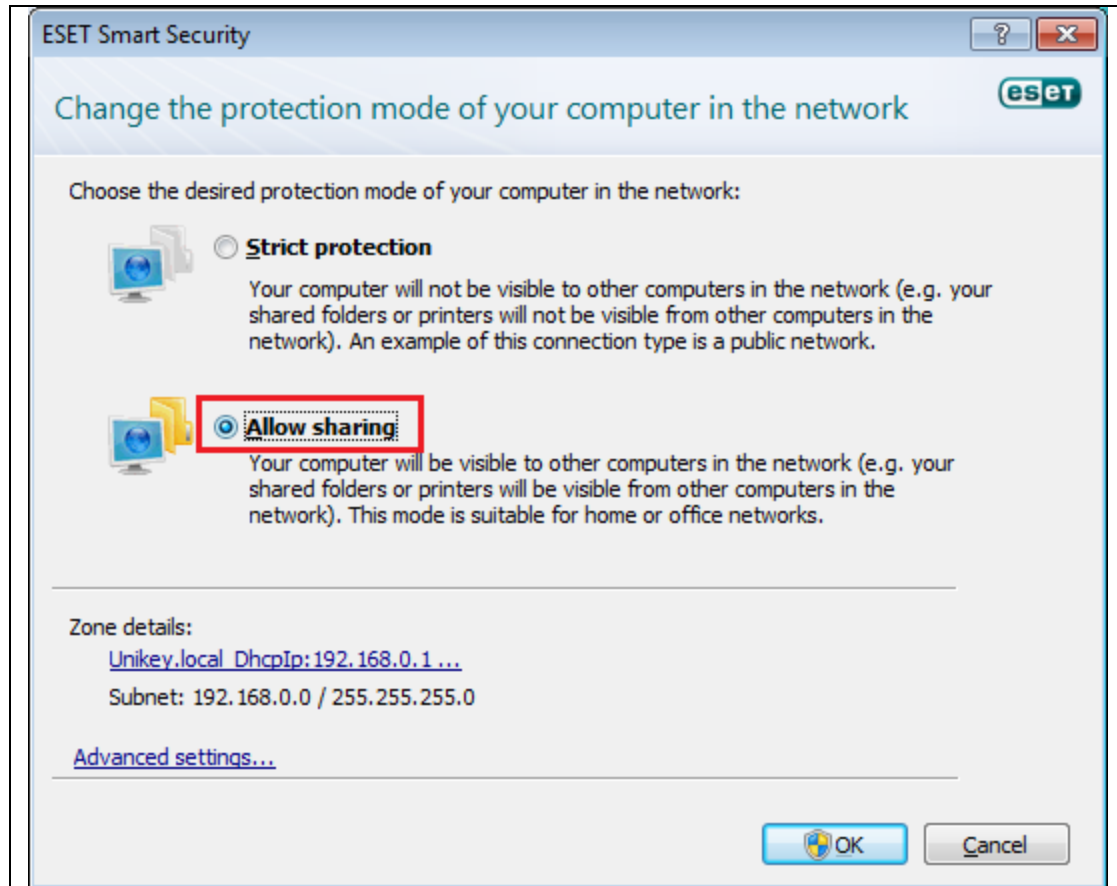


Click to change the protection mode of your computer and allow sharing



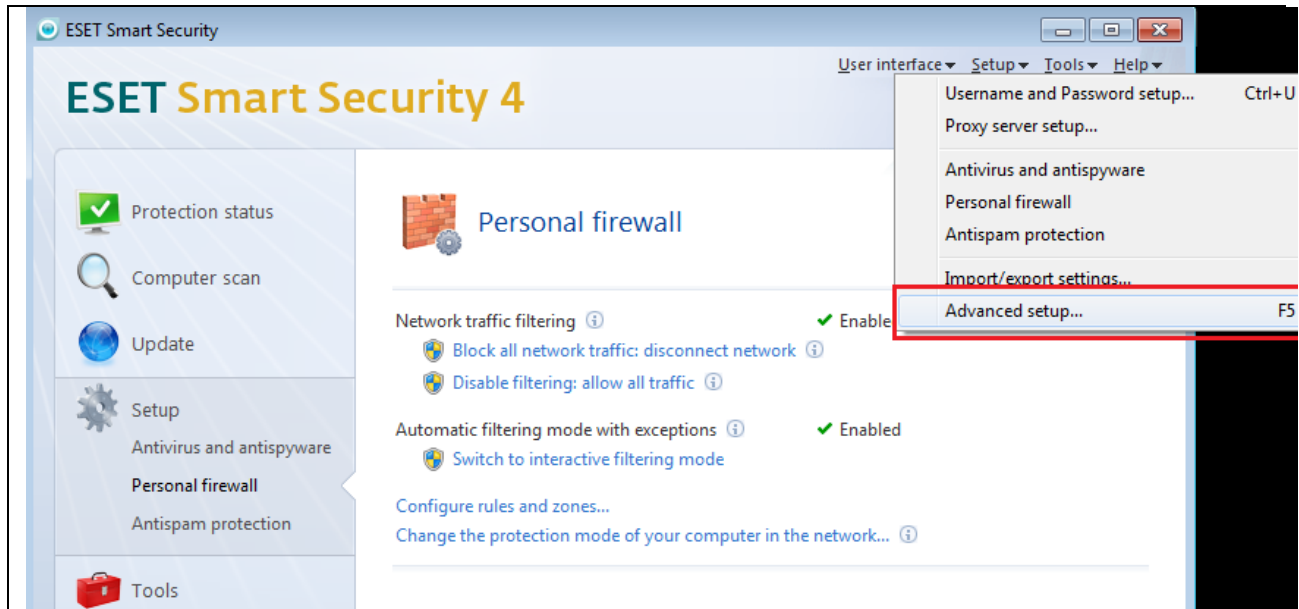


Select Allow Sharing and then OK



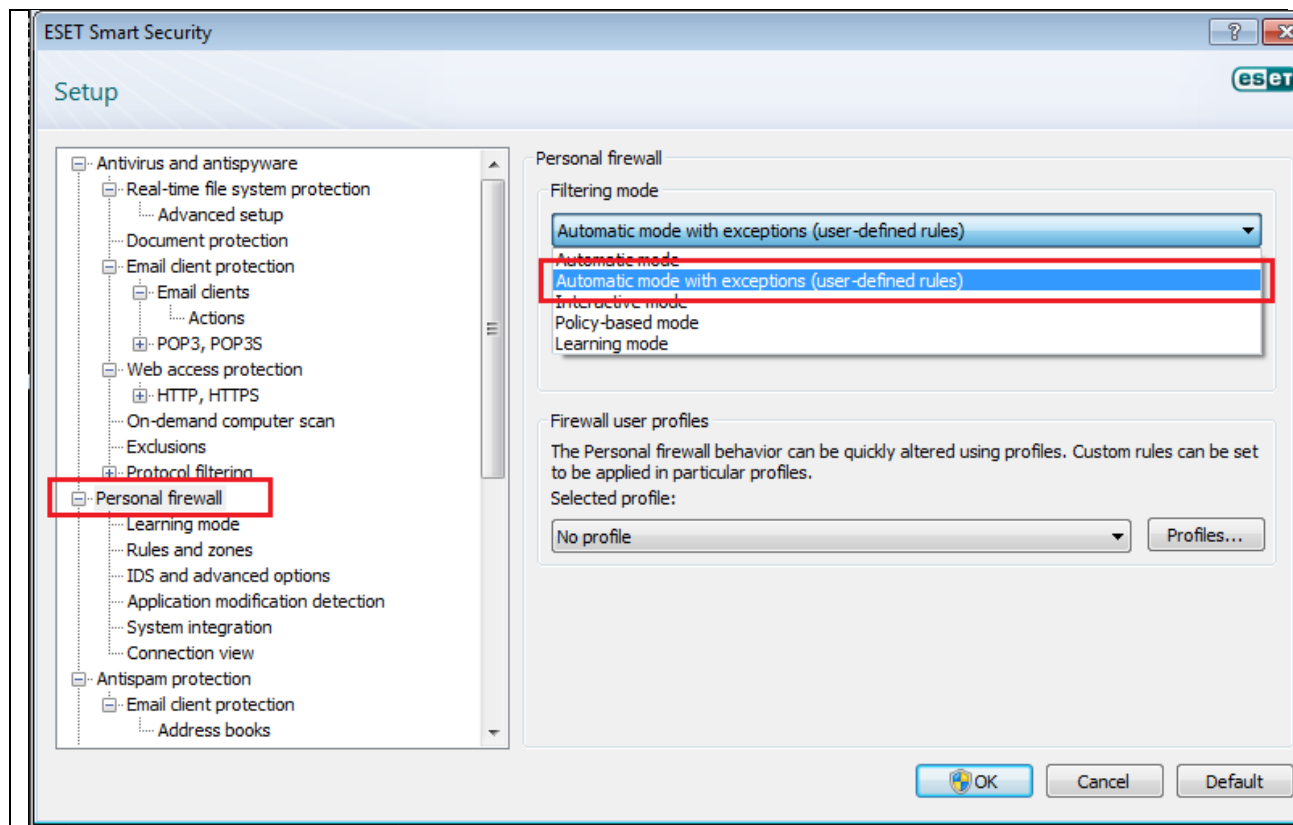


Select advanced setup from the setup drop down



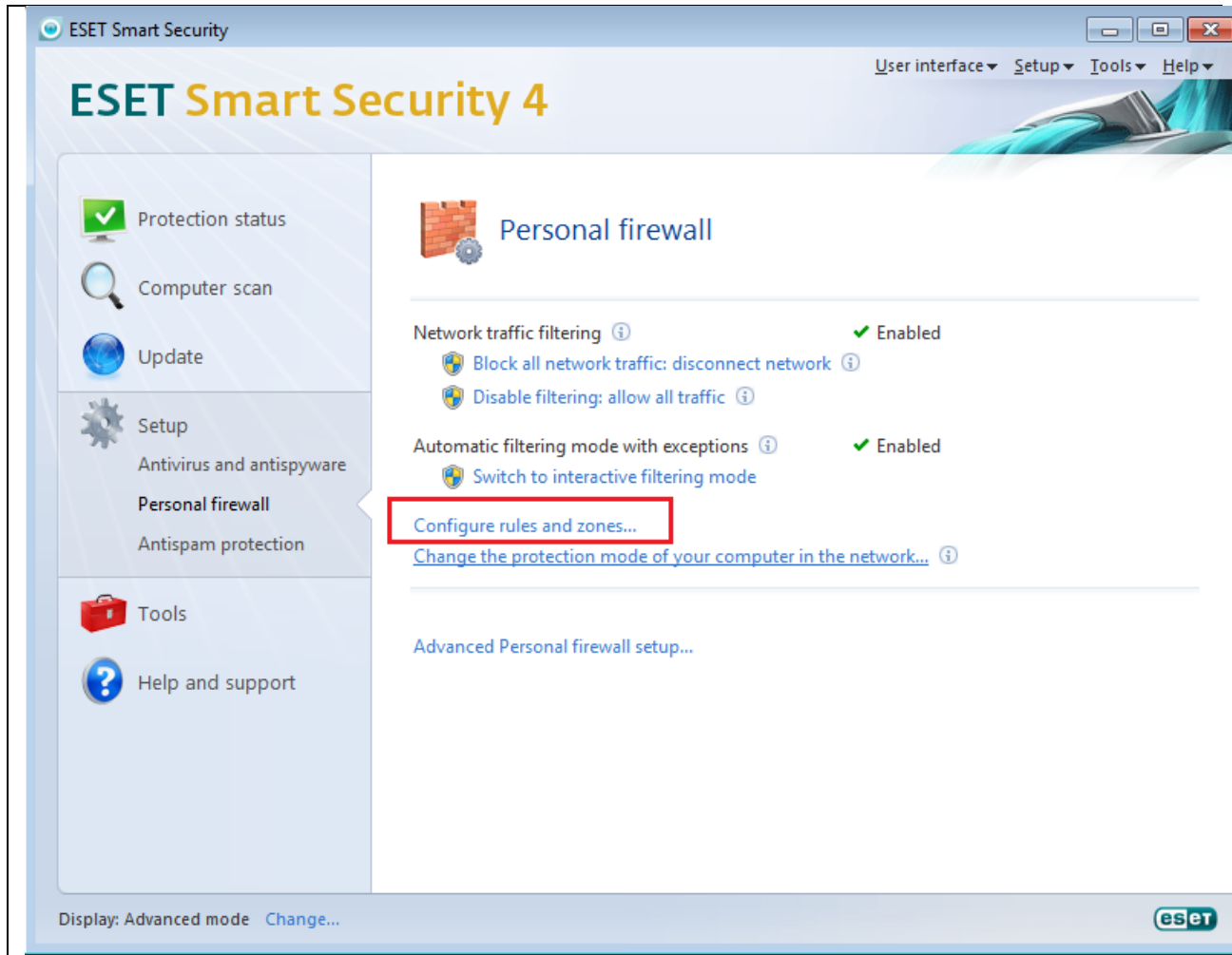


Change the personal firewall to automatic with user defined exceptions



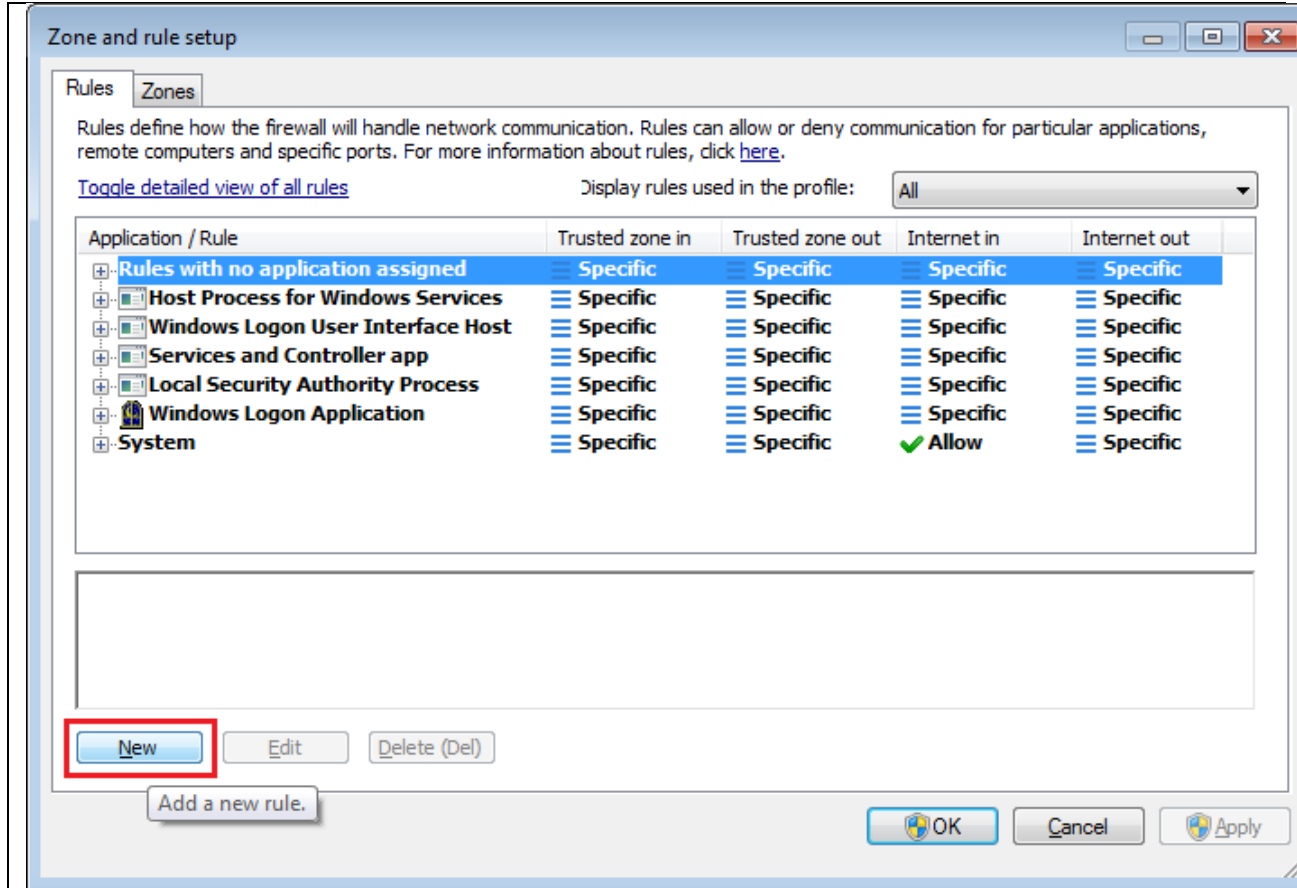


Select configure rules and zones to add a firewall rule





Select new to create a rule





Create a new rule

New rule:

General Local Remote

General information about rule

Name:

Direction:

Action:

Protocol:

Profile:

Additional action

Log Notify user

General: Direction: Both Action: Allow Protocol: TCP & UDP Profile: For e
Remote side: For every
Local side: Ports: For every
Application: C:\Windows\system32\wbem\unsecapp.exe



Create a new rule for the following application

New rule:

General Local Remote

Local port

Add port...
Add port range...
Remove

Application

C:\Windows\system32\wbem\unsecapp.exe
Browse...

General: Direction: Both Action: Allow Protocol: TCP & UDP Profile: For e
Remote side: For every
Local side: Ports: For every
Application: C:\Windows\system32\wbem\unsecapp.exe

OK Cancel



Create another rule

Edit rule:

General Local Remote

General information about rule

Name: SVC All

Direction: Both

Action: Allow

Protocol: TCP & UDP Select protocol...

Profile: For every Profiles...

Additional action

Log Notify user

General: Direction: Both Action: Allow Protocol: TCP & UDP Profile: For e

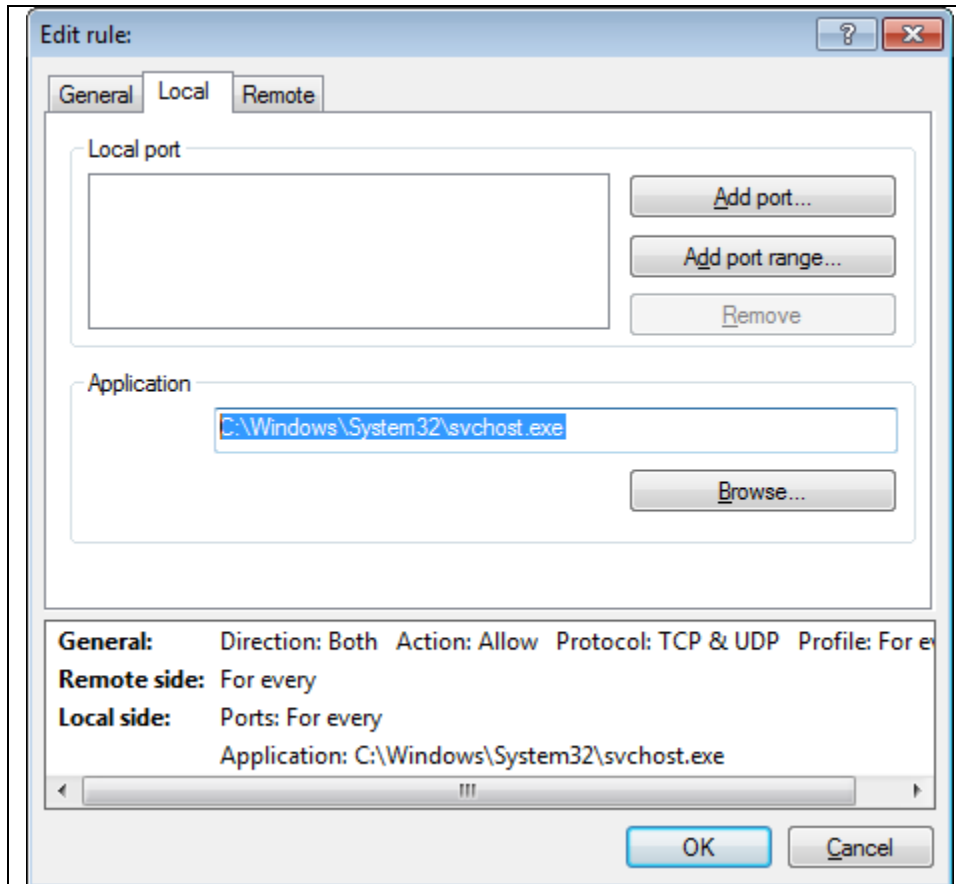
Remote side: For every

Local side: Ports: For every Application: C:\Windows\System32\svchost.exe

OK Cancel



Create a rule for SVChost.exe



You have completed the setup of your firewall.